



23000kg Used Sany Excavator With 1.35m³ Bucket And 70% Gradeability

Our Product Introduction

for more products please visit us on used-excavatormachine.com

Basic Information

- Place of Origin: China
- Brand Name: Sany
- Model Number: SY235C
- Minimum Order Quantity: 1 Set
- Price: Negotiable
- Packaging Details: Container Or Bulk
- Delivery Time: 5-8 work days
- Payment Terms: T/T, L/C, D/A, D/P, Western Union, MoneyGram
- Supply Ability: 100 units per month



Product Specification

- Number: SY023KBG12598
- Bucket Capacity: 1.35m³
- The Rated Power: 128.5-2100kw
- The Gradeability: 70%/35°
- The Ground Voltage: 51kpa
- The Bucket Digging Force: 140kn
- The Digging Force Of Stick: 107kn
- The Maximum Digging Height: 9470mm
- Speed: 5.6/3.5km/h
- Highlight: SY235H Used Sany Excavator, 23000kg Used Sany Excavator, Hydraulic Second Hand Sany Excavator

Product Description

23000kg Used Sany Excavator With 1.35m³ Bucket And 70% Gradeability

PRODUCT DESCRIPTION

The SY235H National IV machine is a brand-new 23T-class excavator product that is fully upgraded around "new power", "new shape" and "new technology" while continuing the advantages of the previous generation model. It adopts HOPE fully electronic control technology, improve the excavation energy efficiency and controllability of the entire machine, improve comfort, and easily perform engineering operations such as earthwork and stonework. Hydraulic system: It adopts a fully electronically controlled hydraulic system. The main pump has outstanding advantages such as "low noise, high efficiency, and high pressure". The main valve has a large flow rate, which effectively reduces the energy loss of the hydraulic system and greatly improves operating performance.

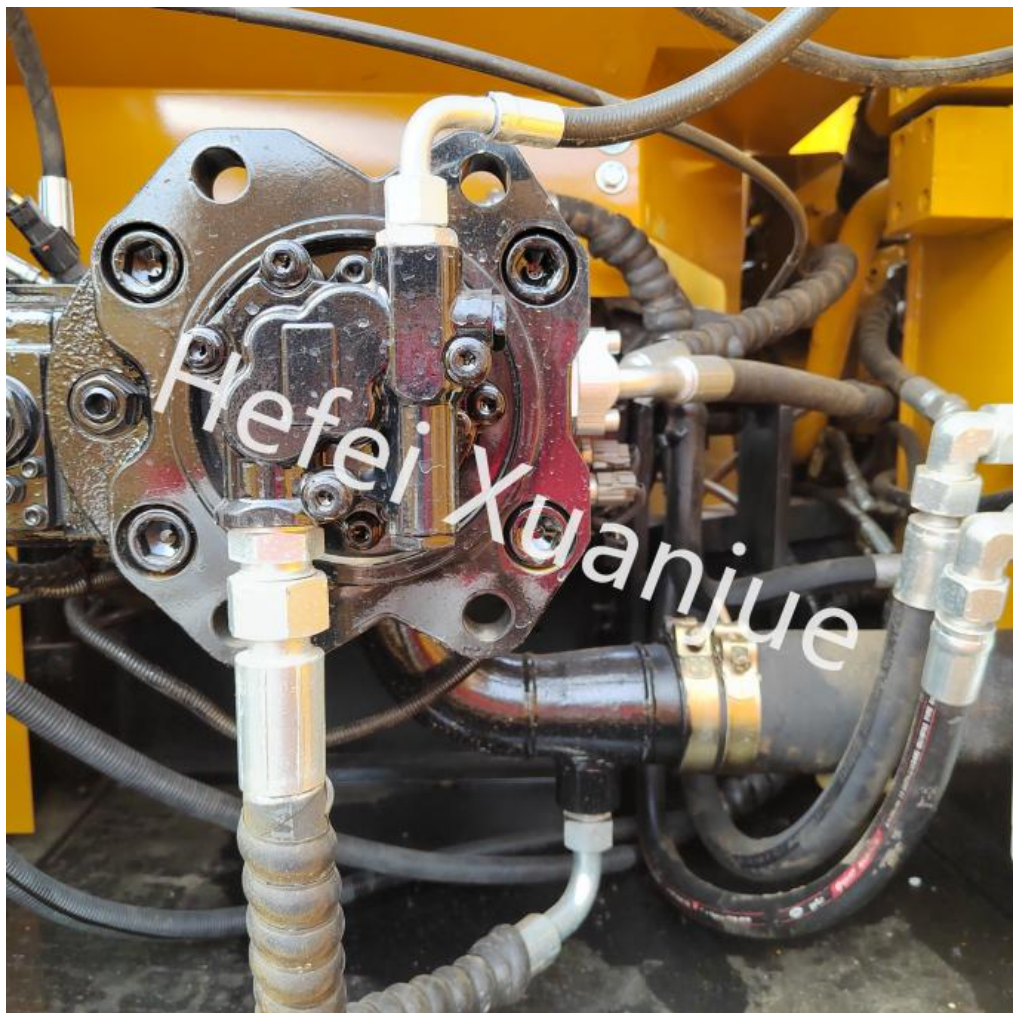
Our Product Int

PRODUCT DETAILS

Xuanjue serves you, operates with integrity and serves with heart

| | |
|------------------------|-------------|
| Maximum digging height | 9.47m |
| Digging force of stick | 140kn |
| Bucket digging force | 107kn |
| Ground voltage | 51kpa |
| Gradeability | 70%/35° |
| Rated power | 11rpm |
| Walking speed | 5.6-3.5km/h |







PACKING AND SHIPPING

1. Bulk carrier: Suitable for larger construction equipment without disassembly.
2. Container: The cheapest and fastest way is to put the machine into the container that needs to be disassembled.

F & Q

Xuanjue Serve For You, Best Quality And Lowest Price

Q1. What payment method?

Payment is negotiable

Q2. Will our company provide any service to the machine?

Yes! Before we deliver the machine, we will test, check, service, maintenance and clean it the machine.

Q3. What's the MOQ ?

MOQ is 1set. FOB or others can be negotiated.

Q4. What's the payment terms?

FOB or others can be negotiated.

Q5. Who pays the freight?

This is determined based on the payment method. We can either find a freight forwarder or the customer can designate a freight forwarder.

If you have any questions, you can call and send an email at any time and leave a message. We will answer you as soon as possible after seeing it.



Hefei Xuanjue Construction Machinery Co., Ltd.



13385604601



used-excavatormachine.com

Sanshitou, Xinzhan District, Feidong County, Hefei City, Anhui Province, China