



## Crawler Type Used Doosan Excavator With Maximum Output Power Of 159kw

### Our Product Introduction

more products please visit us on [used-excavatormachine.com](http://used-excavatormachine.com)

#### Basic Information

- Place of Origin: China
- Brand Name: Doosan
- Model Number: DX300lc-9C
- Minimum Order Quantity: 1 set
- Price: negotiable
- Packaging Details: Bulk or Container
- Delivery Time: 5-8 work days
- Payment Terms: L/C, D/A, D/P, T/T, Western Union, MoneyGram
- Supply Ability: 100 units per year



#### Product Specification

- Max Digging Depth: 7275mm
- Operating Weight: 30215kg
- Hour: 1000h
- Model: DX300LC-9
- Bucket Capacity: 1.45-1.6m<sup>3</sup>
- Power: 159kw/1900KW
- Travel Mode: Crawler Type
- Max Digging Height: 10315mm
- Engine Model: DL08
- Highlight: **Used Doosan Hydraulic Crawler Excavator,  
Crawler Type Used Doosan Excavator,  
Hydraulic Second Hand Doosan Excavator**

# Used Doosan Crawler Excavator with Maximum Output Power of 159kw

## Product Description:

Product Overview: Used Doosan Excavator

The Used Doosan Excavator is a top-of-the-line product designed and manufactured by Doosan, a leading company in the construction equipment industry. This excavator is a hydraulic crawler excavator, known for its exceptional performance and reliability on job sites. With a bucket capacity of 1.75m³, the Used Doosan Excavator is perfect for any digging or loading task. Its powerful hydraulic system allows for smooth and efficient movements, making it a popular choice among construction professionals.

The excavator boasts a maximum digging height of 14100mm, providing the reach and depth needed for various construction projects. Whether it's digging trenches or excavating foundations, the Used Doosan Excavator has the capabilities to get the job done with precision and speed.

Weighing in at 29600kg, this excavator is built to handle heavy-duty tasks. Its sturdy and durable structure can withstand the demands of any job site, ensuring long-lasting performance and minimal downtime.

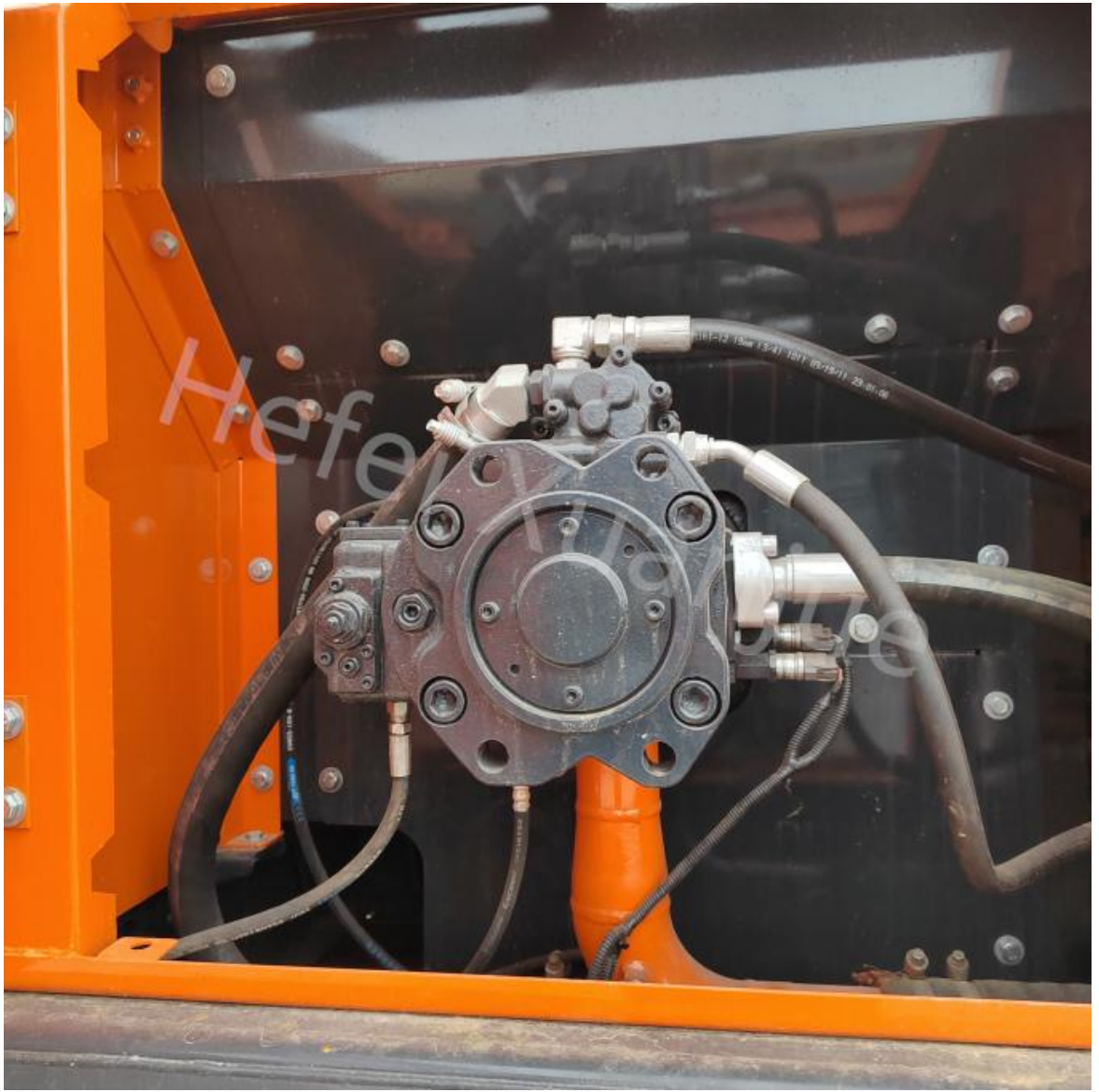
The Used Doosan Excavator is equipped with a powerful engine that delivers a maximum output power of 147kw. This means it can efficiently operate for extended periods without compromising on performance, making it a valuable investment for any construction company.

Overall, the Doosan Crawler Excavator is a reliable and efficient choice for any construction project. With its advanced features and outstanding performance, it is no surprise that it is a top choice among professionals in the industry. Trust Doosan to deliver the best in construction equipment with the Used Doosan Excavator.

## Technical Parameters:

Technical Specifications	Values
Product Name	Doosan Crawler Excavator
Model	DH300LC-7
Year	2020
Travel Mode	Crawler Type
Moving Type	Hydraulic Crawler Excavator
Maximum digging depth	13840mm
Maximum digging height	14100mm
Bucket capacity	1.75m³
Operating Weight	29600kg
Maximum output power	147kw
Hour	3300h











## Applications:

Doosan DH300LC-7 is suitable for a wide range of construction sites, including but not limited to:

**Building construction sites:** Whether it's a residential building, commercial complex, or industrial facility, the Doosan Crawler Excavator can easily handle various tasks such as digging trenches, excavating foundations, and moving heavy materials.

**Road construction sites:** With its maximum digging depth of 13840mm, the Doosan DH300LC-7 is perfect for road construction projects. It can efficiently dig and remove soil, rocks, and debris to create smooth and sturdy roads.

**Mining sites:** The powerful 147kw engine of the Doosan Crawler Excavator makes it a great choice for mining operations. It can handle heavy loads and work in challenging conditions, making it an essential equipment in the mining industry.

**Landscaping projects:** The Doosan DH300LC-7 is not only suitable for heavy-duty tasks, but it can also be used for delicate tasks such as landscaping. Its precise controls and versatile attachments make it perfect for shaping and moving soil, rocks, and trees.

The Doosan DH300LC-7 is proudly made in China, where Doosan has a state-of-the-art manufacturing facility. This excavator is manufactured using advanced technology and strict quality control measures, ensuring its reliability and performance.

**In Conclusion,** The Doosan Crawler Excavator is a versatile and reliable piece of equipment that can handle a variety of construction tasks with ease. Its powerful engine, advanced hydraulic technology, and high-quality materials make it a top choice for construction companies and contractors. So, if you're looking for a durable and efficient excavator, look no further than the Doosan DH300LC-7.

## F & Q:

Xuanjue Serve For You, Best Quality And Lowest Price

Q1. What payment method?

Payment is negotiable

Q2. Will our company provide any service to the machine?

Yes! Before we deliver the machine, we will test, check, service, maintenance and clean it the machine.

Q3. What's the MOQ ?

MOQ is 1set. FOB or others can be negotiated.

Q4. What's the payment terms?

FOB or others can be negotiated.

Q5. Who pays the freight?

This is determined based on the payment method. We can either find a freight forwarder or the customer can designate a freight forwarder.

If you have any questions, you can call and send an email at any time and leave a message. We will answer you as soon as possible after seeing it.



**Hefei Xuanjue Construction Machinery Co., Ltd.**



13385604601



used-excavatormachine.com

Sanshitou,Xinzhan District,Feidong County,Hefei City,Anhui Province,China